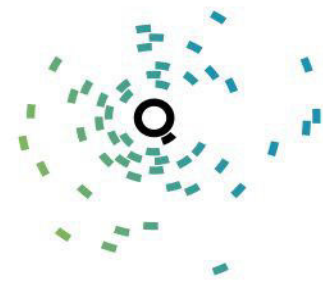




Playlist Manager User Guide 2014



Warning

The information in this manual has been carefully verified and is believed to be accurate. QSound SOFT assumes no responsibility for any inaccuracies that may be contained in this document. Furthermore, QSound SOFT does not make any commitment to update the information contained in this document.

QSound SOFT reserves the right to make changes to this document and/or software at any time and without prior notice.

The technical recommendations, in terms of the hardware architecture and the operating systems running the software presented in this manual, are valid at the publication date of this manual.

Copyright notice

No part of this document may be reproduced, transmitted, transcribed or stored in a data retrieval system nor is it allowed for any part of it to be translated into another language or electronic file, in any form or by any means – electronic, mechanical, magnetic, optical, chemical, manual or otherwise – without the express written permission and consent of QSound SOFT.

Details regarding the trademark

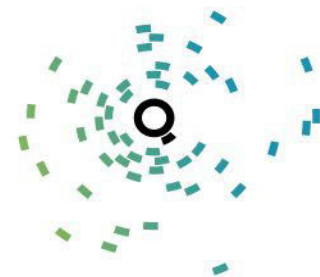
The product or service names mentioned in this document may be trademarks of the companies they relate to.

Revision History

<u>Version</u>	<u>Date</u>	<u>Summary of changes</u>
4.0	20.06.2014	Revision of previos version
3.0	10.10.2013	Multiple editing of the song in the database Preview of the song evolution in an HR level Display of the fields LastUse and LastOnAir
2.0	27.01.2011	Update with the WorkFlow scheme
1.0	28.06.2007	

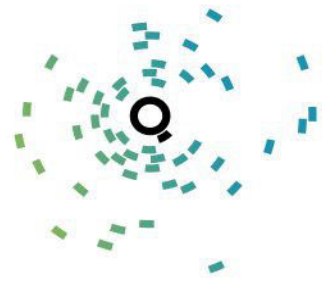
© Copyright 2014, QSound SOFT
All rights reserved.

June 2014



CONTENTS

1. PRESENTATION OF THE PLAYLIST MANAGER.....	4
2. INSTALLATION OF THE PLAYLIST MANAGER.....	5
3. WORK METHOD OF THE PLAYLIST MANAGER.....	6
4. MODULES OF THE PLAYLIST MANAGER.....	8
4.1 System Settings.....	8
4.1.1 Stations/Seasons/Definition of Criteria and Options.....	8
4.1.2 Categories of Jingles/Other Types of Recordings/Genres.....	9
4.1.3 Basic Programs.....	10
4.1.4 HR (Heavy Rotation) Levels/Mechanisms.....	10
4.1.5 Programs.....	11
4.1.6 Restrictions/Other Settings.....	12
4.1.7 Day Part (Non-broadcast Schemes).....	14
4.2 Audio Files.....	14
4.2.1 Synchronization.....	15
4.2.2 Songs.....	15
4.2.3 Multiple Editing of the Songs from the Database.....	16
4.2.4 Jingles.....	18
4.3 Playlist Generator.....	19
4.4 Reports.....	20
4.4.1 Playlist Generation.....	20
4.4.2 Playlist Editing.....	22
4.4.3 HR Level Appearances.....	25
4.4.4 HR Level Songs.....	26
4.4.5 Songs of the Genre.....	26
4.4.6 Statistics on Song Appearance.....	27
4.4.7 Statistics by Genre.....	28



1. PRESENTATION OF THE PLAYLIST MANAGER

The PLAYLIST MANAGER manual – version 2014 – is the official user's guide for the latest version of the PLAYLIST MANAGER radio automation software, intellectual property of SC QSound SOFT SRL.

SC QSound SOFT SRL has been operating on the Romanian market since 2000 and is one of the leading producers of radio automation software solutions dedicated to clients in Romania and Eastern Europe. Our solutions, designed and created 100% in Romania, are constantly adapted to the needs of our customers, the company's policy being flexible on the modification of applications, in accordance with the specific requests of our partners.

The Playlist Manager (PM) application addresses radio stations for the purpose of automating the preparation of radio music programs. The application is a music selector that can be natively interfaced with the STUDIO Q application. The songs are automatically imported from the STUDIO Q database, the user has only to define the musical line of the radio station.

It is allowed to define the seasons and to customize the music programs of a season according to the strategy of the program department. When all settings are done, the Playlist Manager will generate the playlist for the selected days, being able to automatically export it to the broadcasting software.

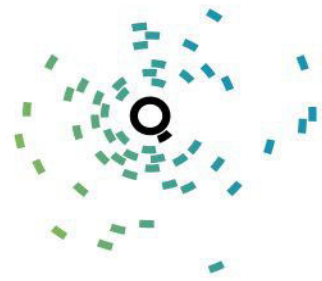
Technical recommendations

1. Hardware configurations recommended and tested by QSound SOFT

- Processor: Intel Pentium 4 2,4 Ghz
- RAM: 2 GB DDR2 800 Mhz
- HDD: min. 40GB
- Sound card: onboard
- Video card: onboard
- Network card: onboard

2. Operating systems

- Windows 7, Windows 8



2. INSTALLATION OF THE PLAYLIST MANAGER

Due to the complexity of the new operating systems and the issues raised by the network access rights, the firewalls implemented by the WINDOWS operating system or the antivirus software installed on your computers, we recommend that you call the Support Center Service of QSound SOFT SRL for installations and updates.

Contact details of the Support Center Service:

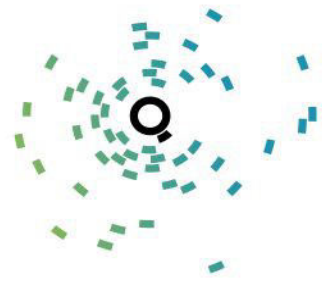
e-mail: support@qsoft.ro;

phone: (+40) 264. 413.031

mobile: (+40) 0742.054.189

If the installation of the Playlist Manager application is performed by the client, the following steps are to be taken:

- the Playlist Manager application is to be installed from the kit of the product;
- the "PreLicence.exe" file is to be run from the "C:\Program Files\PlaylistManager" location and the "syspm.dll" file is to be sent to the Support Center Service for licensing;
- the "syspm.dll" file received from the Support Center Service is to be copied to "C:\Program Files\PlaylistManager";
- the SQL Server 2012 is to be installed, after which the MusicDB database is to be attached;
- in the ODBC, the SQL Server connection is to be created to the MusicDB database.



3. WORK METHOD OF THE PLAYLIST MANAGER

A. General setup of the application

This initialization is done just once, right after installing the PM on your computer. For each step listed below, a path is specified in order to reach the user interface, where specific data can be updated.

- Initialization of the radio station (page 8)
 - > System Settings/Season Stations/Stations
- Season setup and season period (page 8)
 - > System Settings/Season Stations/Seasons
- Criteria Definition and Criteria Values for the classification of songs (page 8)
 - > System Settings/Season Stations/Definition of Criteria and Options
- Creation of jingle categories (page 9)
 - > System Settings /Jingles-Genres-Other Recordings/Jingle Categories
- Definition of basic programs (page 10)
 - > System Settings/Basic Programs
- Definition of HR mechanisms (optional) (page 10)
 - > System Settings/HR Levels-Mechanisms

B. Classification of songs and jingles according to the criteria defined above

Each audio recording (song/jingle) that you want to include in the final playlist must be given some criteria by which it can be processed by the distribution algorithms of the program. The editing of these criteria is done separately for songs and jingles:

1. Songs (page. 15)
 - > Audio files/Songs

Some of the criteria of each song are automatically imported from STUDIO Q upon the synchronization of the data. The specific criteria for the rotation of the song by the Playlist Manager mechanisms must be edited from the interface shown above. The Day Part criterion is important because it specifies the times when certain songs may be broadcasted or not (e.g. exclusion of carols from the playlist except for December; songs broadcasted only in the morning or at night, etc.).

If the song runs in Heavy Rotation, attach it to a mechanism and specify a level from which it begins to run.

2. Jingles (page. 18)
 - > Audio Files/Jingles



Just like audio tracks, jingles may have selection criteria by means of preselected categories or Day Part restriction.

C. Format Clock settings and its mapping according to the days of a season

After the songs and jingles have been categorized and have received the selection criteria, the person in charge of the radio station's programs must define some music recipe schedules (Format Clock) meeting the listeners' expectations, assign them to certain time segments in the 24-hour program of the radio station.

1. Definition of the Format CLOCK (Programs) (page 11)

> System Settings/Programs

Using this feature, as well as the elements instantiated in steps (A) and (B), several program types can be created, each with its musical specifics. Their length cannot exceed 59:59 (~ one hour).

2. Playlist Generator – mapping of each Format Clock on an hourly segment (page 19)

>Playlist Generator

In order to generate the playlist for a certain day, the system needs specific data. The system must be positioned on a specific date, on a well-defined time and it must select the Format Clock by which it can generate the playlist. All these positioning details are given by the Playlist Generator interface, where the season and the format of the season week are selected and the approved musical format is specified for each day of this week.

Once all these settings have been done, the use of the PM application is limited to the following operations:

Generation of the daily playlist and its export to Studio Q

> Reports/Generation

Periodically, when the radio receives new tracks, these are to be introduced into the rotation mechanism of the Playlist Manager using the previously specified interface.

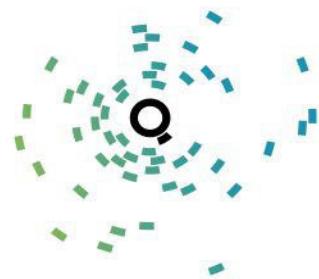
When the person in charge of the radio station's programs wishes to improve the playlist recipe, he/she can change the Format Clock's features to customize the musical line of the radio station in the best way possible, thus retaining the listeners.

*Each screen that allows for data input or modification works as described below. The allowed commands are: “**Adaugare**” (Add), “**Modificare**” (Change), “**Stergere**” (Delete), “**Salvare**” (Save) and “**Anulare**” (Cancel).*

A new item can be added by pressing the “**Adaugare**” (Add) button. This will activate the data that needs to be entered for the execution of the operation. Once the data have been entered, press the “**Salveaza**” (Save) button.

In order to make modifications, the item to be edited will be selected, after which the “**Modificare**” (Change) button is pressed. This will activate the data that can be modified. After modification press the “**Salveaza**” (Save) button.

In order to delete, the item to be deleted will be selected, after which the “**Stergere**” (Delete) button is pressed. The “**Anulare**” (Cancel) button cancels the changes made to the selected item.



4. MODULES OF THE PLAYLIST MANAGER

4.1 System Settings

This is the main menu in which all settings are done. Based on these settings, the Playlist Manager application will generate the broadcast playlist. Great importance must be given to the settings defined in this menu, because the generation of a complete and correct playlist is highly dependent on the settings defined here.

4.1.1 Stations/Seasons/Definition of Criteria and Options

This is the interface in which the name of the radio station, the seasons on the basis of which playlists are generated and the playlist generation criteria are defined.

► Possibility to set the name of the radio station. A radio station is defined by name and description.

Name	Description
QSound Soft	InfoTraffic

► Possibility to define the seasons in a year.

A season is defined by:

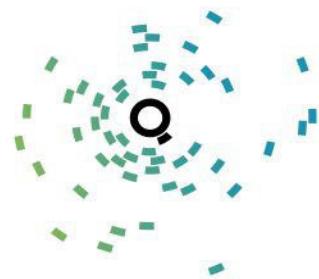
- name of the season
- description of the season
- first day of the season
- last day of the season

Season Name	StartDay	EndDay	Description
Primavara	02.03.2013	01.06.2014	Primavara
Vara	02.06.2013	30.09.2014	Vara
Toamna	01.10.2013	30.11.2014	Toamna
Iarna	01.12.2013	01.03.2014	Iarna

► Possibility to define the criteria for tracks. Four distinct criteria can be defined, each of which can have any number of options (values).

E.g:

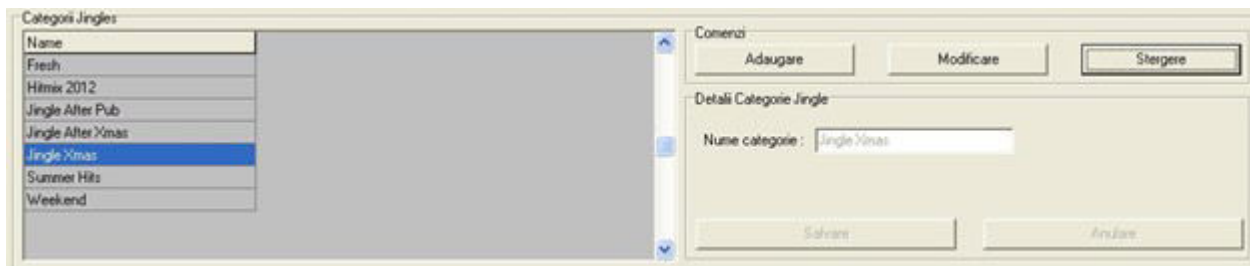
- Criterion: Rhythm
- Available values: Slow, Medium, Fast.



4.1.2 Categories of Jingles/Other Types of Recordings/Genres

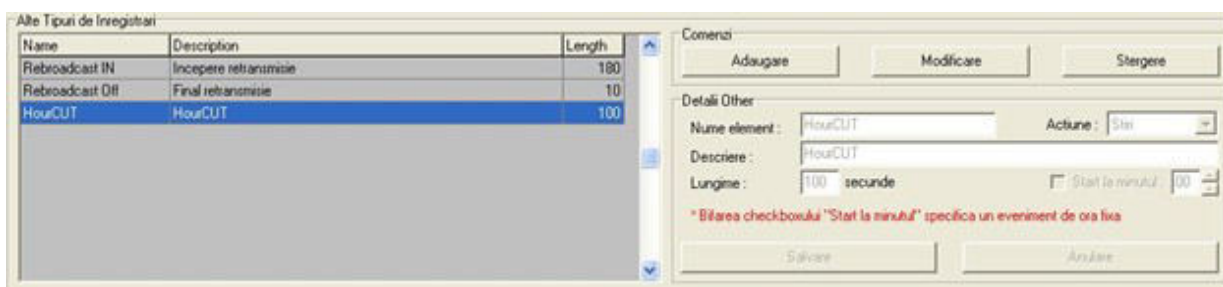
For a better organization of the jingle-type recordings, as well as for an easier control, the PM application offers the possibility to create several **categories of jingles**. A jingle category is defined by the name.

E.g.: Fresh, Jingle After Pub, etc.



Other types of recordings – allows the creation of other types of items that can be included in a music program. These items are defined by:

- name
- description
- action to be executed (if working with the STUDIO Q application): Satellite ON, Satellite Off, News, HourCUT
- duration in seconds

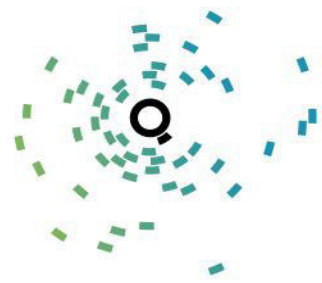


Recording type:

- Satellite ON: allows switching into the Rebroadcast IN mode via a playlist without specifying this type of event in an advertising grid.
- Satelit Off: allows switching into the Rebroadcast OUT mode via a playlist without specifying this type of event in an advertising grid.
- HourCUT: allows the termination of a playlist, on a time slot, at the insert of this item. Basically, after this item no playlist will be generated for the time interval in progress.

Genres - A musical genre is defined by the name and description; a unique color can be assigned for each genre in order to identify the genres created in the PM more easily.

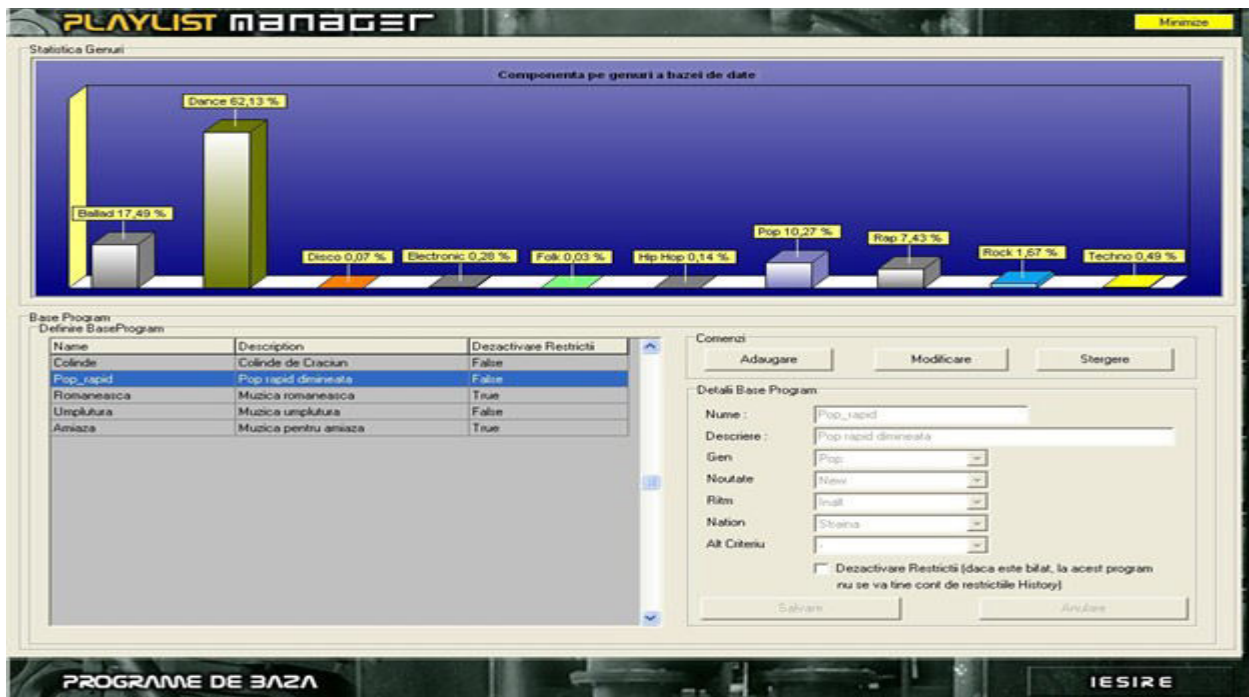
Note: These genres are not the same as the ones presented in the STUDIO Q database. The creation of these genres is valid only for the Playlist Manager application.



4.1.3 Basic Programs

Allows the creation of basic programs that can be inserted into the music programs. A basic program is characterized by:

- name
- description
- music genre that makes up the program. Here, besides selecting the genre, the desired values can also be selected for the defined criteria. For the desired genres the option to deactivate restrictions such as History is also available.
- novelty: fresh, new, current, recurrent, old
- rhythm: high, medium, slow
- nation



4.1.4 HR (Heavy Rotation) Levels / Mechanisms

The evolution of the songs existing in the database can be defined via the rotation mechanisms. For the functionality of this feature, when editing the songs that compose the PM database, the HR (heavy rotation) levels must be specified.

The HR level is characterized by:

- name
- description

A HR mechanism is characterized by:

- name
- description
- HR (heavy rotation) levels which it goes through.

Playlist Manager



When defining the mechanisms, the number of weeks for which a given song will stay at the specified HR level must be defined for each HR level of the mechanism. Basically, a song will stay in the rotation mechanism until the defined number of weeks expires. When this time expires, it will automatically move into the next rotation mechanism.

Nivele HR

Level_ID	Name	Description
80	Fresh	Fresh
73	Gold 1	2006-2008
74	Gold 2	2000-2006
76	H1	Piese noi
77	H2	Piese staine
78	H3	Piese romanesti
39	HOT_1	HOT_1
47	HOT_2	HOT_2

Comenzi
Adauga Modifica Sterge

Detalii Nivel
Nume: Fresh
Descriere: Fresh
Culoare: [Green Bar]
Salvare Anulare

Define Mecanisme

Mecanisme

Name	D
Ora Exacta	PL
Jingle	PL
Mecanism H1	H1
Mecanism H2	H2
Mecanism H3	H3
Mecanism H4	H4
Mecanism RIJ	RIJ
Mecanism RM	RM

Comenzi
Adauga Modifica Sterge

Detalii Mecanism
Nume: Mecanism H1
Descriere: HOT1+HOT6
Salvare Anulare

Nivele Mecanism

Name	NumWeeks
HOT_1	1
HOT_6	6

Comenzi
Adauga Modifica Sterge

Detalii Nivel
Numar saptamani: 1
Nivel: HOT_1
Salvare Anulare

00:00:02:07

PLAYLIST

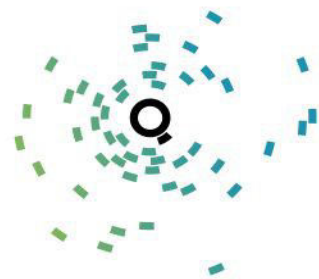
After going through all the assigned rotation levels, a song will automatically move into the category of songs that do not have associated rotation mechanisms.

4.1.5 Programs

Music programs according to which a playlist is generated are created in this section. A music program takes 60 minutes and consists of 4 types of elements:

- basic programs (defined in section 5)
- Heavy Rotation levels (defined in section 6)
- jingles
- other elements (defined in section 4)

Playlist Manager



The times on the left side of the grid display the minute and second when the elements inserted into the program will enter the hour. The calculation is estimated on the basis of the average duration of a song in the database or of a jingle defined in the "studio.ini" file.

4.1.6 Restrictions / Other Settings

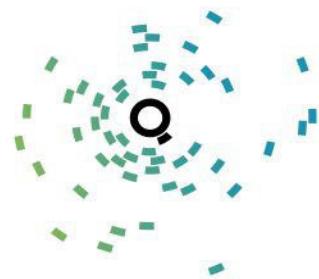
The Restrictions interface is divided into two categories:

- Restrictions Song A -> Song B
- Restrictions History

► Restrictions Song A -> Song B

The type A->B restrictions define the first set of rules that must be met so that 2 songs that are at a distance smaller than "X" songs fulfill the criteria of the playlist. A song B with the specifications given by the value of the criteria will not be broadcasted after song A for the duration of "X" songs.

Playlist Manager



The following steps are to be followed in order to define a restriction:

- in the Commands menu press the “Adaugare” (Add) button;
- in the “Detalii restrictie” (Restriction details) field complete the field "Restriction name";
- the restriction is defined as follows: a song with the criterion “A” is NOT followed by a song with the properties of criterion “B” for the duration of “X” songs;
- press “Salvare” (Save).

The order in which the two types of criteria are applied is A->B followed by History..

► Restriction History

The History-type restrictions define the rules for playlist generation by taking into account the properties of the songs that have been broadcasted a few minutes or hours ago. The song with the specified criterion will not be repeated for the duration of “X” songs..

ID	Nume	Criteriu	Nr piese	Activ HR	Valoare Crit
34	Piesa	Artist	10	True	
33	Artist	Artist	10	True	

The following steps are to be followed in order to define a restriction::

- in the commands menu press “Adaugare” (Add);
- the restriction is defined as follows: do NOT repeat the same song (specification of criterion) for the duration of “X” songs (specification of the number of songs);
- press “Salvare” (Save).

The order in which the two types of criteria are applied is A->B followed by History.

Other settings

Cheie	Valoare	Descriere
ACTIVARE_INTERVAL_NEDIFUZARE	0	Activare Restrictie Interval INTERVAL_NE
INTERVAL_NEDIFUZARE	1	Restrictie nedifuzare piesa daca a mai fost

Playlist Manager



● **Activation of the non-broadcasting interval** – Option that allows the activation of the non-broadcasting interval. It has two values:

0 – option disabled and 1 – option enabled.

● **Non-broadcasting interval** – This is a restriction expressed in hours which defines the number of hours during which a music track from the Song category will not be broadcasted the next day for the duration of “X” hours from the day before. In other words, the “INTERVAL_NEDIFUZARE=1” value translates as: when generating a playlist for the following day, the hours when the songs were generated in the current playlist will be taken into account and the songs that were generated in today’s playlist will not be introduced to the next playlist for 1 hour before and after the moment of their generation in today’s playlist. The bigger the value set for “INTERVAL_NEDIFUZARE”, the more restrictive the generated playlist – this implies a database with as many songs as possible. The recommendation of QSound SOFT is a value of “1” or “2”.

4.1.7 Day Part (Non-broadcast Schemes)

This feature allows the definition of the periods in which a song is not available. You can specify the month, the day of the week (from Monday to Sunday), as well as the hours of a day (00-24) during which a song is unavailable. The Non-broadcast Schemes can be associated with the songs and jingles. The red area means that the song is not broadcasted during the respective period.

PLAYLIST MANAGER

DayPart

ID	Nume	activeHR
1	day part 1	True
2	day part 2	True
3	day part 3	True
4	day part 5	True

Comenzi: Adauga, Modifica, Sterge

Detalii restrictie:

Nume restrictie: day part 3 ☒ Se aplica la HR

Piese care au asociat acest tip de restrictie: 2

Salvare Anulare

	00	01	02	03	04	05	06	07	08	09	10	11	12	13	14	15	16	17	18	19	20	21	22	23
Luni	Red	Red	Red	Red	Red	Red	Red	Green	Green	Green	Green	Green	Green	Green	Green	Green	Green	Green	Green	Green	Green	Green	Green	Green
Marti	Red	Red	Red	Red	Red	Red	Red	Green	Green	Green	Green	Green	Green	Green	Green	Green	Green	Green	Green	Green	Green	Green	Green	Green
Miercuri	Red	Red	Red	Red	Red	Red	Red	Green	Green	Green	Green	Green	Green	Green	Green	Green	Green	Green	Green	Green	Green	Green	Green	Green
Joi	Red	Red	Red	Red	Red	Red	Red	Green	Green	Green	Green	Green	Green	Green	Green	Green	Green	Green	Green	Green	Green	Green	Green	Green
Vineri	Red	Red	Red	Red	Red	Red	Red	Green	Green	Green	Green	Green	Green	Green	Green	Green	Green	Green	Green	Green	Green	Green	Green	Green
Sambata	Red	Red	Red	Red	Red	Red	Red	Red	Red	Red	Red	Red	Red	Red	Red	Red	Red	Red	Red	Red	Red	Red	Red	Red
Duminica	Red	Red	Red	Red	Red	Red	Red	Red	Red	Red	Red	Red	Red	Red	Red	Red	Red	Red	Red	Red	Red	Red	Red	Red

Ianuarie	Februarie	Martie	Aprilie	Mai	Iunie	Iulie	August	Septembrie	Octombrie	Noiembrie	Decembrie
Red	Red	Red	Red	Red	Green	Green	Green	Green	Green	Red	Red

Functionalitate:

- Restrictie de tip DayPart definesc
- o piesa poate fi restrictionata pentru oricare din lunile anului (se marcheaza cu rosu luna pentru care piesa sa nu fie disponibila)
- o piesa poate fi restrictionata pentru oricare zi si ora din cadrul unei saptamani (se marcheaza cu rosu ziua si ora pentru care piesa sa nu fie disponibila)

Legenda:

- Red Restrictionat
- Green Disponibil

RESTRICTII DATA SI TIMP IESIRE

4.2 Audio files

This module contains all the audio recordings (songs and jingles) existing in the STUDIO Q database and is structured as follows:

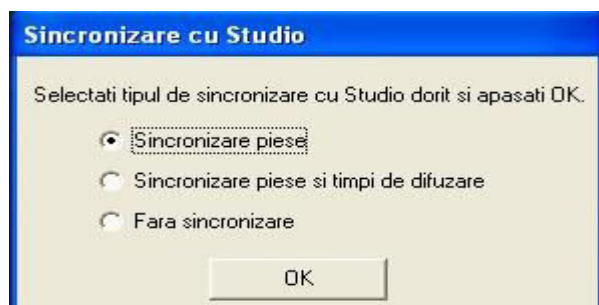
- synchronization
- songs
- jingles

Playlist Manager



4.2.1 Synchronization

When pressing the “Sincronizare” (Synchronization) button, the Playlist Manager database will be synchronized with the STUDIO Q database as shown below:



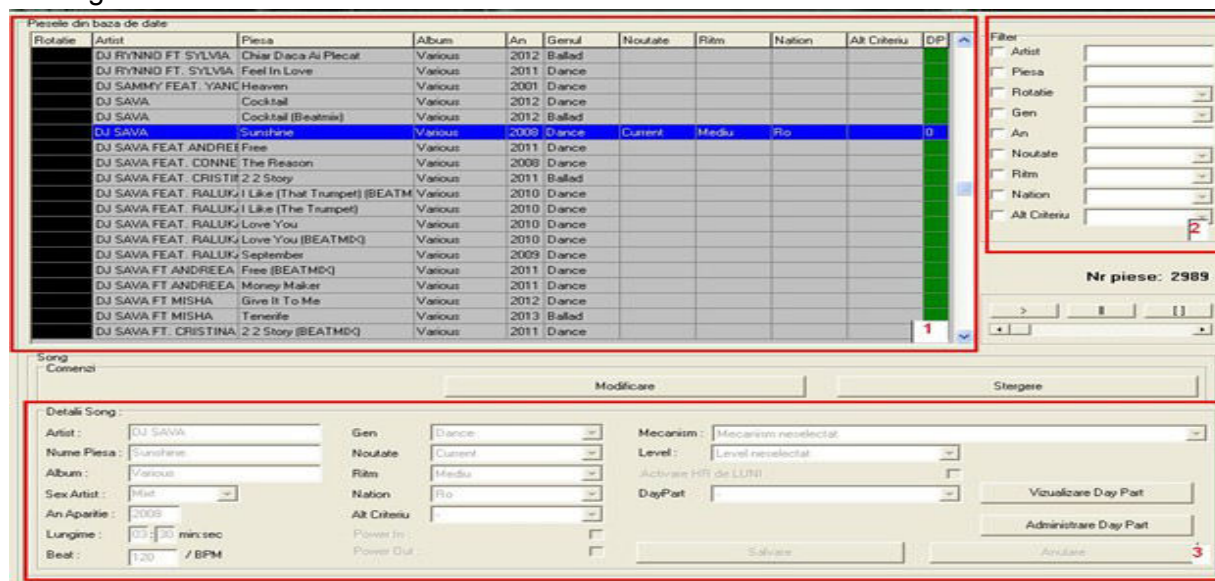
Synchronization can be done in two ways:

- Sincronizare piese (Synchronization of songs): when selecting this option, all information regarding the audio tracks is transferred from the STUDIO Q database.
- Sincronizare piese si timpi de difuzare (Synchronization of songs and broadcasting times: when selecting this option, all information regarding the audio tracks is transferred from the STUDIO Q database together with the broadcasting times.

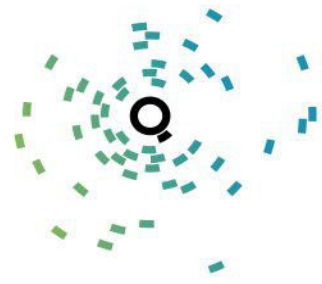
When a playlist is generated with the PM application, all information regarding the broadcasting times of the generated songs in the playlist is stored in the PM database. When selecting the option “Sincronizare piese si timpi de difuzare”, the PM application will consider the last broadcasts of the audio recordings played OnAir. Because of this, in order to generate a playlist as proper as possible, it is recommended not to perform the synchronization option more than once a week.

4.2.2 Songs

This is the menu for editing the songs that make up the database related to the radio station. Any changes to the audio tracks can be made from here.



Playlist Manager



The interface of the “Songs” menu is divided into three areas:

1. Songs in the database

This interface presents all audio tracks in the database with specific information for each song::

- Rotation
- Artist
- Song
- Album
- Year
- Genre
- Novelty
- Rhythm
- Nation
- Other criterion (defining for the audio track)
- Day Part

2. Filter

In order to easily find an audio track in the database, the PM provides several search filters:

- Artist
- Song
- Rotation
- Genre
- Year
- Novelty
- Rhythm
- Nation
- Other criterion (defined by the user)

Moreover, this interface offers the possibility of listening to the selected recording.

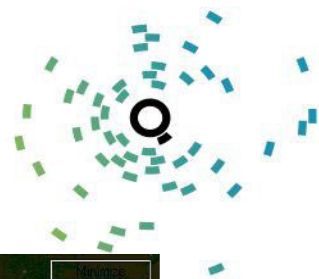
3. Song Details

This interface presents all the details that define a song in the database or the modifications that can be made to this song. To modify a song press the “Modificare” (Change) button, after which the “Song Details” interface will become active, offering the possibility to modify the data that define the selected recording. When the editing of the selected recording has been completed, press the “Salvare” (Save) button.

4.2.3 Multiple Editing of the Songs in the Database

The Playlist Manager application allows the multiple editing of the recordings that have common characteristics. In the example below you can see the change of the rhythm for several songs with the selected “*Rhythm*” option.

Playlist Manager



PLAYLIST MANAGER

Piese din baza de date

Rotatie	Artist	Piesa	Album	LastUse	LastOnAir	An	Genul	Ritm	P
	ADAM ANT	Goody Two Shoes	Friend or Foe	01.10.2013 07:16:01		1982	_80	3 Rapid	
	ADRIANO CELENTANO	Il Tempo Se Ne Va	Un po' artista un po' no	05.10.2013 16:48:26		1980	_80	1 Lent	
	AL BANO & ROMINA PO	Canzone Blu	Effetto Amore	30.09.2013 14:47:59		1984	_80	2 Mediu	
	AL BANO & ROMINA PO	Ci Sara	Effetto Amore	12.09.2013 13:55:28		1984	_80	2 Mediu	
	AL BANO & ROMINA PO	Felicità	Felicità	26.09.2013 15:30:59		1982	_80	2 Mediu	
	AL BANO & ROMINA PO	Sempre, Sempre	Sempre, Sempre	14.09.2013 08:58:29		1986	_80	2 Mediu	
	AL BANO & ROMINA PO	Sharazan	Felicità!	14.09.2013 17:52:18		1980	_80	1 Lent	
	AL BANO & ROMINA PO	Tu Soltanto Tu	Che Angelo Sei	25.09.2013 09:48:16		1982	_80	1 Lent	
	ALAN BARRY	Come On	The Best Of	03.10.2013 06:16:00		1986	_80	2 Mediu	
	ALBERT ONE	Turbo Diesel	I Love Disco	04.10.2013 18:08:01		1984	_80	3 Rapid	
	ALICE	Una Notte Speciale	Alice	04.10.2013 20:23:05	04.10.2013 20:25:42	1981	_80	2 Mediu	
	ALISON MOYET	Weak In The Presence Of Be	Raindancing	26.09.2013 22:45:38		1987	_80	1 Lent	
	ALPHAVILLE	Big In Japan	Forever Young	15.10.2013 12:45:15	15.10.2013 12:56:48	1984	_80	2 Mediu	
	ALPHAVILLE	Dance With Me	Afternoons in U	04.10.2013 11:23:31		1986	_80	3 Rapid	
	ALPHAVILLE	Forever Young	Forever Young	02.10.2013 13:46:48		1984	_80	1 Lent	
	ALPHAVILLE	Sounds Like A Melody	Forever Young	12.09.2013 12:09:44		1984	_80	2 Mediu	
	AMEDEO MINGHI	La Vita Mia	La Vita Mia	26.09.2013 05:43:40		1989	_80	1 Lent	
	ARABESQUE	Tall Story Teller	Caballero	27.09.2013 09:16:20		1982	_80	3 Rapid	

Filter

☒ Artist

☐ Piesa

☐ Rotatie

☒ Gen: _80

☐ An

☐ Ritm

☐ PowerIn

☐ Gen muzical

☐ Limba

Nr piese: 395

Song

Comenzi

Modificare

Stergere

Detali Song:

Artist: ALAN BARRY

Nume Piesa: Come On

Album: The Best Of Italo Disco Vol. 6

Sex Artist: Mixt

An Aparitie: 1986

Lungime: 03:51 min:sec

Beat: 231370 / BPM

☐ Gen: _80

☒ Ritm: 2 Mediu

☐ PowerIn: -

☐ Gen muzical: -

☐ Limba: Engleza

☐ Mecanism: Mecanism neselectat

☐ Level: Level neselectat

☐ Activare HR de LUNI

☐ DayPart: -

Vizualizare Day Part

Administrare Day Part

Salvare

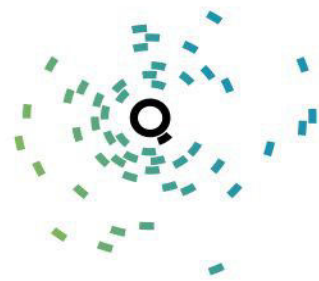
Anulare

PIESE

IESIRE

The “LastUse” and “LastOnAir” fields associated with the music tracks of the database are useful to see the last programming of a song in a playlist (LastUse), as well as the last time it was actually on air (LastOnAir).

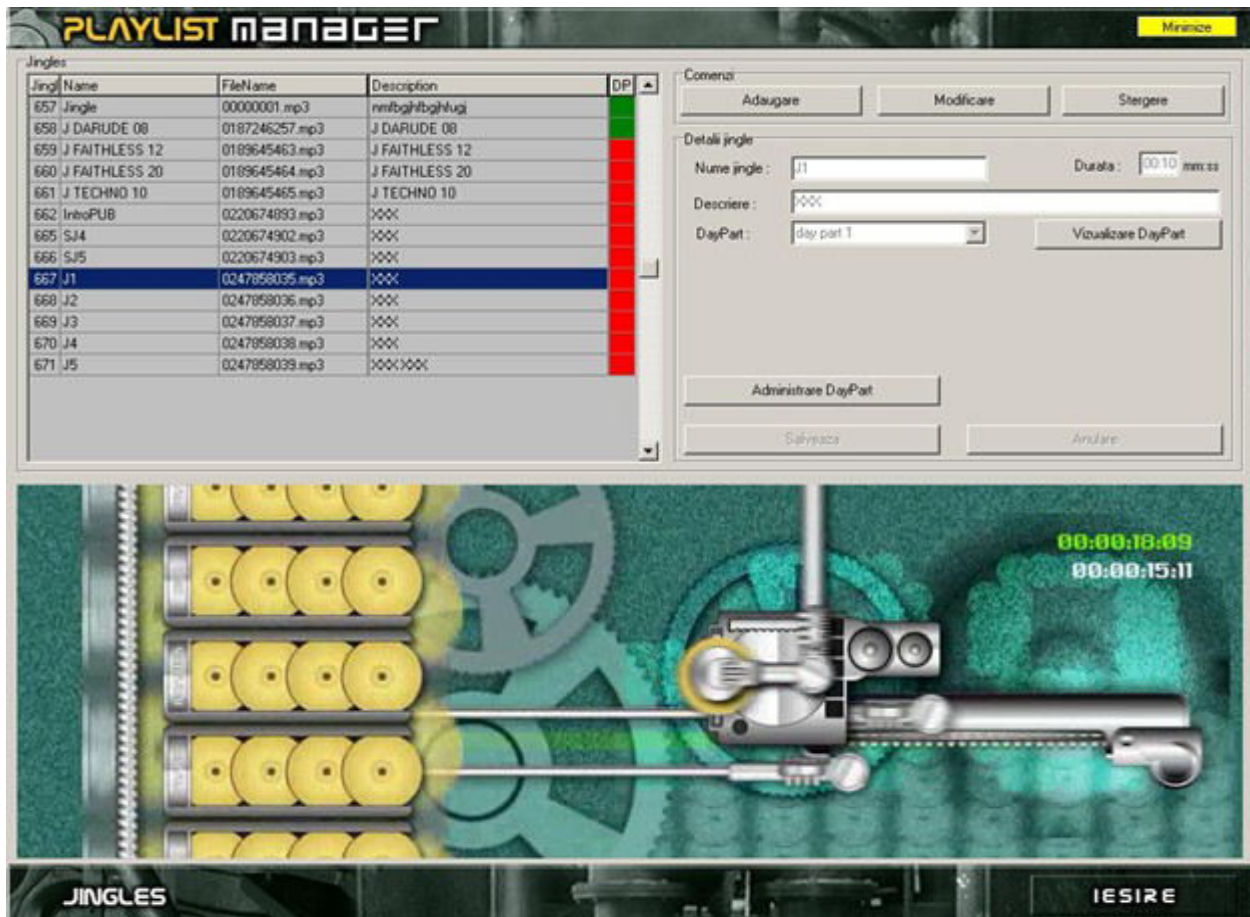
Playlist Manager



4.2.4 Jingles

In this menu it is possible to add jingles to the database. A jingle has the following components:

- name
- description
- category to which it belongs (time intervals in which the respective jingle can be aired)
- length



Playlist Manager



4.3 Playlist Generator

This module allows the mapping of the programs in the weekly time grid. Each season of a station can have a distinct weekly time grid. The time grid is defined for a whole week (Sun., Mon., Tue., Wed., Thu., Fri., Sat.). In each time slot of the grid (cell) a particular program can be mapped.

The interface is divided into several sections:

- Selectie Statie / Sezon:** Includes a dropdown for 'Selectie Statie' and a table for 'Selectie Sezon'.
- Grila Orara:** A weekly time grid with columns for days of the week and rows for time slots.
- Lista de programe disponibile:** A list of available programs.
- Detalii Program:** A section for program details.
- Adaugare Ora de Start:** A section for adding start times.
- Comenzi:** A section for commands.

Season Name	StartDay	EndDay	Description
Iama	27.12.2012	15.05.2013	nou
Vara	16.05.2013	14.12.2013	cald
X-Mas	15.12.2013	26.12.2013	Craciun

	Duminica	Luni	Marti	Miercuri	Joi	Vineri	Sambata
00:00->01:00	Rock	Rock	Rock	Rock	Rock	Rock	Rock
01:00->02:00	Rock	Rock	Rock	Rock	Rock	Rock	Rock
02:00->03:00	Blank	Blank	Blank	Blank	Blank	Blank	Blank
03:00->04:00	Blank	Blank	Blank	Blank	Blank	Blank	Blank
04:00->05:00	Noapte	Noapte	Noapte	Noapte	Noapte	Noapte	Noapte
05:00->06:00	Noapte	Noapte	Noapte	Noapte	Noapte	Noapte	Noapte
06:00->07:00	Blank	Buna diminea!	Buna diminea!	Buna diminea!	Buna diminea!	Buna diminea!	Popular
07:00->08:00	Blank	Buna diminea!	Buna diminea!	Buna diminea!	Buna diminea!	Buna diminea!	Blank
08:00->09:00	Blank	Blank	Blank	Blank	Blank	Blank	Blank
09:00->10:00	Blank	Blank	Blank	Blank	Blank	Blank	Blank

Adaugare Ora de Start:

00:00
01:00
02:00
03:00
04:00
05:00
06:00
07:00
08:00
09:00
10:00
11:00
12:00

Add

Del

Comenzi:

Normalizare Grila

Salvare Grila

Lista de programe disponibile:

- Buna dimineata
- Exclusiv
- Blank
- Noapte
- Popular
- Rock
- Rock 1/2
- Zi Xmas
- Po Xmas
- aaa

Detalii Program:

- 00:00 Rock
- 03:45 Rock
- 07:30 JG orice categ
- 07:45 Rock
- 11:30 Rock
- 15:15 JG orice categ
- 15:30 Rock
- 19:15 Rock
- 23:00 JG orice categ
- 23:15 Rock
- 27:00 Rock
- 30:45 JG orice categ
- 31:00 Rock
- 34:45 Rock
- 38:30 JG orice categ
- 38:45 Rock
- 42:30 Rock
- 46:15 HourCUT

The mapping of the musical programs can be achieved via the following steps:

- **Station/Season selection:** The desired station and season are selected. A separate time grid can be defined for each season.
- **Adding the Start Time:** Time intervals are defined for each season from 00:00 to 24:00 hrs using the "Add" and "Del" buttons.
- In order to map a program in the weekly grid select the program from the **List of available programs**, then click on the days/time intervals where you want to introduce the respective program. In the **Detalii program (Program details)** area you can view the components of the selected program.
- After filling in the grid click on the **"Salvare Grila" (Save grid)** button.

Playlist Manager



4.4 Reports

This module enables the user to generate the playlist, edit the playlist, print the playlist, as well as to export the playlist in STUDIO Q or other formats (TXT, XLS, SPF). In addition, you can view and print statistics on the songs from a certain genre, the appearances of a certain song in previous playlists, statistics by genre and the evolution of a song.

Generare PLAYLIST		GENERARE		EDITARE	TIPIRIRE	SINCRO cu Studio
Selectati statia : Info Traffic	Selectati ziua : 11.07.2013	EXPORT To Studio		EXPORT TXT	EXPORT Excel	EXPORT SPF
		PLAYLIST VS BACKUP				
Aparitii Nivel HR						
Selectati statia : Info Traffic	De la : 11.07.2013	Pana la : 11.07.2013	Generare Raport			
Piese de Nivel HR						
Data : 11.07.2013	Nivelul HR : Current	Generare Raport				
Piese de Genul						
Genul : 1 FM Powergold		Generare Raport				
Evolutie Piesa :						
Piesa : 10,000 MANIACS - Because The Night		Generare Raport				
Statistici						
Aparitii Piesa						
Piesa : 10,000 MANIACS - Because The Night		Generare Raport				
Statistica Genuri						
Generare Raport						

4.4.1 Playlist Generation

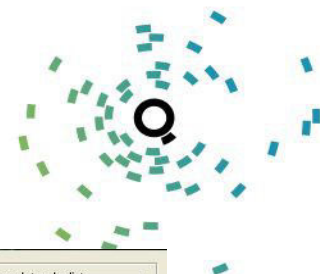
It is considered the most important report. It generates the playlist of a station from a given day. Once the playlist has been generated, it can be manually modified, exported into the broadcasting application or it can be exported as a text or csv file.

The following steps are to be taken for the generation of a playlist:

- select the radio station;
- select the day for which the playlist will be generated;
- press the **“Generare” (Generate)** button.

The playlist is generated for a 24 h interval and will look as follows:

Playlist Manager



Section 1: Playlist

Nr.Crt.	Ora Start	Artist - Piesa	R History	R Restrict	Tip	Lungimea	Genul
127	11.07.2013 07:42:38	SMOKIE - Don't Play You Rock~n~Roll To Me	DA	DA	BP	03:13	2 Gold
128	11.07.2013 07:45:51	RCJ flash 2	DA	DA	JG	00:03	
129	11.07.2013 07:45:54	DESPERADO - E ora inchiderii	DA	DA	BP	03:54	1 Rom
130	11.07.2013 07:49:48	MAURO - Buona Sera-Ciao Ciao	DA	DA	BP	03:46	2 Gold
131	11.07.2013 07:53:34	55 jingle 4b	DA	DA	JG	00:22	
132	11.07.2013 07:53:56	HourCUT	DA	DA	DI	00:01	
133	11.07.2013 08:00:00	***** Blank *****	DA	DA	PR	00:01	
134	11.07.2013 09:00:00	***** Blank *****	DA	DA	PR	00:01	
135	11.07.2013 10:00:00	***** Blank *****	DA	DA	PR	00:01	
136	11.07.2013 11:00:00	***** Exclusiv *****	DA	DA	PR	00:01	
137	11.07.2013 11:00:01	JULIO IGLESIAS - Baila Morena	DA	DA	BP	03:42	2 FM Gold
138	11.07.2013 11:03:43	ABBA - Thank You For The Music	DA	DA	BP	03:38	3 Oldies
139	11.07.2013 11:07:21	ID lent 8s	DA	DA	JG	00:08	
140	11.07.2013 11:07:29	THE PRETENDERS - I'll Stand By You	DA	DA	BP	03:51	2 Gold

Section 2: Statistica

Total linii : 251
 Linii goale : 0
 Linii cu probleme : 0
 Programe baza : 149
 Heavy Rotation : 0
 Jingles : 67
 Alte elemente : 35

Section 3: Time intervals

Buttons: 01, 02, 03, 04, 05, 06, 07, 08, 09, 10, 11, 12, 13, 14, 15, 16, 17, 18, 19, 20, 21, 22, 23

Section 4: Proprietati Piesa

Rotatie	Artist	Piesa	LastUse	An	Genul	Ritm	Mood	Gen muzical	Limba
10,000 MANIACS	Because The Night	28.05.2013 12:00:01	1993	2 FM Gold	2 Mediu	3 Happy	1 Pop	Intl	
38 SPECIAL	Hold On Loosely	21.05.2013 00:46:11	1980	5 FM Rock					
3REI SUD EST	De ziua ta	29.05.2013 06:31:30	2000	1 Rom	3 Rapid	3 Happy	1 Pop	Rom	
A-HA	Butterfly, Butterfly	29.05.2013 05:00:01	2010	4 FM Evening					
A-HA	Foot Of The Mountain	28.05.2013 04:38:25	2009	4 FM Evening					
ABBA	Andante, Andante	29.05.2013 12:04:11	1980	3 Oldies	2 Mediu	3 Happy	1 Pop	Intl	
ABBA	Chiquitita	29.05.2013 13:26:36	1979	3 Oldies	1 Lent	1 Sad	3 Easy List	Intl	
ABBA	Dancing Queen	29.05.2013 07:33:05	1976	3 Oldies	3 Rapid	3 Happy	1 Pop	Intl	
ABBA	Fernando	24.05.2013 13:30:16	1976	3 Oldies	2 Mediu	2 Medium	1 Pop	Intl	
ABBA	Knowing Me Knowing You	29.05.2013 06:02:13	1977	3 Oldies	3 Rapid	3 Happy	1 Pop	Intl	
ABBA	Thank You For The Music	21.05.2013 13:35:26	1976	3 Oldies	2 Mediu	2 Medium	1 Pop	Intl	
ABBA	The Winner Takes It All	28.05.2013 12:03:25	1977	3 Oldies	1 Lent	1 Sad	3 Easy List	Intl	
ABBA	Waterloo	27.05.2013 05:22:28	1974	3 Oldies	3 Rapid	3 Happy	1 Pop	Intl	
ACE OF BASE	Happy Nation	19.05.2013 06:19:09	1993	2 FM Gold	3 Rapid	3 Happy	1 Pop	Intl	

Section 4: Filter

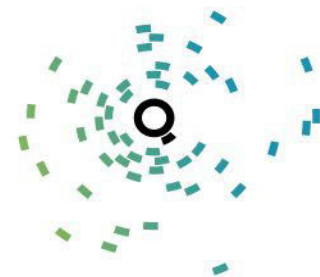
Filter options: Artist, Piesa, Rotatie, Gen, An, Ritm, Mood, Gen muzical, Limba

INLOCUIESTE

The interface resulting from the generation of a playlist is divided into 4 sections:

- 1. Playlist** - this is the interface displaying the playlist resulting from its generation criteria;
- 2. Statistics** - a brief statistics is presented about the generated playlist; information is presented on:
 - total lines: the total number of lines included in the playlist (number of recordings);
 - empty lines: the total number of lines without content;
 - problematic lines: the total number of lines in which problems have occurred during the generation of the playlist; in order to identify the problems that arise in this statistics, the user can view a log of the generated playlist in the "Error Log" tab; usually, the main issues arising in this log refer to the non-compliance with the restrictions defined in the "Restrictii" (Restrictions) menu;
 - basic programs: the total number of programs used to generate the playlist;
 - Heavy Rotation: the total number of recordings for which the Heavy Rotation category has been defined;
 - Jingle: the total number of jingles that can be found in the playlist;
 - other elements: the total number of recordings that belong to the "Other elements" category defined by the user;
- 3. Time intervals** - are represented via buttons for each separate time interval; when pressing these buttons, the playlist is displayed for the respective hour, without the need to scroll the playlist to the selected hour;
- 4. Song properties** - this interface shows all the properties included in the PM database; the replacement of the songs generated by the PM application is performed in this interface.

Playlist Manager



4.4.2 Playlist editing

Once the playlist has been created, it can be edited manually. There are three types of operations that can be performed on a playlist:

- replacement – a song from the playlist is replaced with another one from the database as follows:
 - the song is selected from the generated playlist;
 - the song meant to replace the recording selected at the previous point is searched for (using search filters); if necessary, the song can be listened to.
 - the **“Inlocuieste” (Replace)** button is to be pressed;
- copy/paste – a song from the playlist is copied from a certain position to another one;
- delete – a song is deleted from the playlist;

The copy/paste/delete options become active when clicking the right mouse button on the selected track.

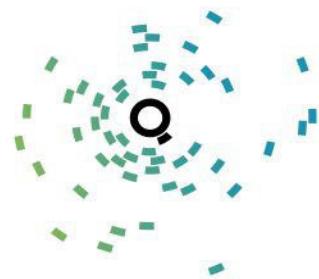
The screenshot displays the 'Playlist Manager' application. The main window is titled 'Playlist' and contains a table with columns: Nr. Cit., Ora Start, Artist - Piesa, R. History, R. Restrict, Tip, Lungimea, and Genul. A right-click context menu is open over the 10th track, showing options: Copy, Paste, Delete, Apariti Programari Piesa, Apariti Difuzari Piesa, and Raport Difuzare 2 saptamani. To the right of the playlist table is a 'Selectare data playlist' section with a date dropdown set to '11.07.2013' and an 'Incarcare playlist' button. Below that is a 'Statistica' section showing: Total linii: 251, Linii goale: 0, Linii cu probleme: 0, Programe baza: 149, Heavy Rotation: 0, Jingles: 67, and Alte elemente: 35. At the bottom of the window is a 'Proprietati Piesa' section with tabs for 'Error Log' and 'Change Log'. The 'Error Log' tab is active, showing a table with columns: Rotatie, Artist, Piesa, LastUse, An, Genul, Ritm, Mood, Gen muzical, and Limba. The 'Change Log' tab is also visible. The 'Filter' section on the right side of the 'Proprietati Piesa' table has radio buttons for Artist, Piesa, Rotatie, Gen, An, Ritm, Mood, Gen muzical, and Limba, with 'Artist' selected. Below the filter is an 'INLOCUIESTE' button and a small navigation bar.

After each of the three operations the “Start Time” is recalculated for the entire playlist.

Error Log – the file containing the errors that have occurred during the generation of the songs (songs that have not been found or which do not meet the required criteria);

Change Log – displays information about the songs that have been manually replaced after the generation of the playlist;

Playlist Manager

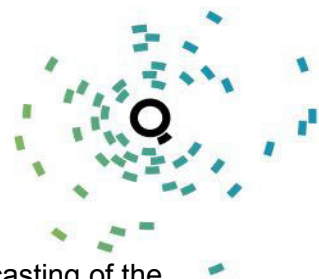


Additional information for the manual editing of a playlist

The PM application offers three very useful functions for the manual editing of the playlist:
Appearances of song programming: a short log is presented about the past programmings for the selected song.

Aparitii Piesa	
Ora Start	Artist - Piesa
11.07.2013 00:20:19	RAINBOW - Man On The Silver Mountain
16.05.2013 23:47:59	RAINBOW - Man On The Silver Mountain
28.04.2013 00:41:26	RAINBOW - Man On The Silver Mountain
10.04.2013 01:15:56	RAINBOW - Man On The Silver Mountain
21.11.2012 23:46:49	RAINBOW - Man On The Silver Mountain

Playlist Manager



Appearances of song broadcasting: a short log is presented about the OnAir broadcasting of the selected song..

Aparitii Piesa	
Ora Start	Artist - Piesa
11.07.2013 00:30:04	RAINBOW - Man On The Silver Mountain
17.05.2013 00:00:01	RAINBOW - Man On The Silver Mountain
29.04.2013 22:16:06	RAINBOW - Man On The Silver Mountain
10.04.2013 22:34:12	RAINBOW - Man On The Silver Mountain
13.02.2013 22:23:13	RAINBOW - Man On The Silver Mountain

Report on two-week broadcasting: represents a broadcasting report for a period of 14 days, in which the number of broadcasts for each day is displayed separately. Such a report looks like the one shown in the image below:

Raport Difuzare piesa pe 2 saptamani

Raport Difuzari

<<

16.05.2013

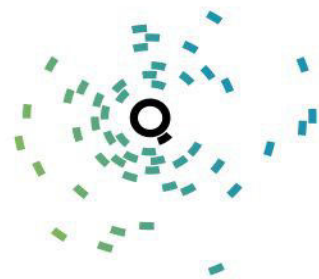
>>

BRUNO MARS - Just The Way You Are

	16-MAI	17-MAI	18-MAI	19-MAI	20-MAI	21-MAI	22-MAI	23-MAI	24-MAI	25-MAI	26-MAI	27-MAI	28-MAI	29-MAI
00 - 01	0	0	0	0	0	0	0	0	0	0	0	0	0	0
01 - 02	0	1	0	0	1	0	0	0	0	0	0	0	0	0
02 - 03	0	0	0	0	0	0	0	0	0	0	0	0	0	0
03 - 04	0	0	0	0	0	0	0	0	0	0	0	0	0	0
04 - 05	0	0	0	0	0	0	0	0	0	0	0	0	0	0
05 - 06	0	0	0	0	0	0	0	0	0	0	0	0	1	0
06 - 07	0	0	0	0	0	0	0	0	0	0	0	0	0	0
07 - 08	0	0	0	0	0	0	0	0	0	0	0	0	0	0
08 - 09	0	0	0	0	0	0	0	0	0	0	0	0	0	0
09 - 10	0	0	0	0	0	0	0	0	0	0	0	0	0	0
10 - 11	0	0	0	0	0	0	0	0	0	0	0	0	0	0
11 - 12	0	0	0	0	0	0	0	0	0	0	0	0	0	0
12 - 13	0	0	0	0	0	0	0	1	0	0	0	0	0	0
13 - 14	0	0	0	0	0	0	0	0	0	0	0	0	0	0
14 - 15	0	0	0	0	0	0	0	0	0	0	0	0	0	0
15 - 16	0	0	0	0	0	0	0	0	0	0	0	0	0	0
16 - 17	0	0	0	0	0	0	0	0	0	0	0	0	0	0
17 - 18	0	0	0	0	0	0	0	0	0	0	0	0	0	0
18 - 19	0	0	0	0	0	0	0	0	0	0	0	0	0	0
19 - 20	0	0	0	0	0	0	0	0	0	1	0	0	0	0
20 - 21	0	0	0	0	0	0	0	0	0	0	0	0	0	0
21 - 22	0	0	0	0	0	0	0	0	0	0	0	0	0	0
22 - 23	0	0	0	0	0	0	0	0	0	0	0	0	0	0
23 - 24	0	0	0	0	0	0	0	0	0	0	0	1	0	0

CLOSE

Playlist Manager



Playlist vs. Backup

As shown above, the songs generated with the PM can be replaced manually. The PM offers the possibility to see a comparative report between the original playlist and the modified playlist.

Selecteaza Data	11.07.2013	Incarca raportul	Salveaza in fisier
Original Playlist vs Modified Playlist Comparative Report			
StartHour	Generated Playlist	Operation	Modified Playlist
05:00:00	ABBA - Waterloo		ABBA - Waterloo
05:00:00	MARGARETA PASLARU - Ale tale (& Dan Spataru)		MARGARETA PASLARU - Ale tale (& Dan Spataru)
05:00:00	MORTEN HARKET - Scared Of Heights		MORTEN HARKET - Scared Of Heights
05:00:00	JUANES - A Dios Le Pido		CHER - If I Could Turn Back Time
06:00:00	***** Buna dimineata *****		***** Buna dimineata *****
06:00:00	ADRIANA HAGAU - Aries fecior de crai		ADRIANA HAGAU - Aries fecior de crai
06:00:00	ELECTRIC LIGHT ORCHESTRA - Hold On Tight		ELECTRIC LIGHT ORCHESTRA - Hold On Tight
06:00:00	JENNIFER LOPEZ - Love Don't Cost A Thing		JENNIFER LOPEZ - Love Don't Cost A Thing
06:00:00	EIFFEL 65 - Blue (Da Ba Dee)		E SMOKIE - Mexican Girl
06:00:00	HOLOGRAF - Banii Vorbesc (live)		KYLIE MINOGUE - Love At First Sight
06:00:00	ID alert 9s		ID alert 9s
06:00:00	CARTOONS - Witch doctor		CARTOONS - Witch doctor
06:00:00	RAY CHARLES - Hit The Road Jack		RAY CHARLES - Hit The Road Jack
06:00:00	ID dance 13s		ID dance 13s
06:00:00	GHITA MURESAN - Hartag		GHITA MURESAN - Hartag
06:00:00	OTTAWAN - Hands Up		OTTAWAN - Hands Up
06:00:00	JASON MRAZ - Lucky (ft. Colbie Caillat)		FLORIN SASARMAN - Lelita
06:00:00	BANANARAMA - Venus		BANANARAMA - Venus
06:00:00	TALISMAN - Petrecerea		TALISMAN - Petrecerea
Select Ore (orele)			
<input checked="" type="checkbox"/> 0 <input checked="" type="checkbox"/> 1 <input checked="" type="checkbox"/> 2 <input checked="" type="checkbox"/> 3 <input checked="" type="checkbox"/> 4 <input checked="" type="checkbox"/> 5 <input checked="" type="checkbox"/> 6 <input checked="" type="checkbox"/> 7 <input checked="" type="checkbox"/> 8 <input checked="" type="checkbox"/> 9 <input checked="" type="checkbox"/> 10 <input checked="" type="checkbox"/> 11 <input checked="" type="checkbox"/> 12 <input checked="" type="checkbox"/> 13 <input checked="" type="checkbox"/> 14 <input checked="" type="checkbox"/> 15 <input checked="" type="checkbox"/> 16 <input checked="" type="checkbox"/> 17 <input checked="" type="checkbox"/> 18 <input checked="" type="checkbox"/> 19 <input checked="" type="checkbox"/> 20 <input checked="" type="checkbox"/> 21 <input checked="" type="checkbox"/> 22 <input checked="" type="checkbox"/> 23			

The steps needed for the creation of such a report are:

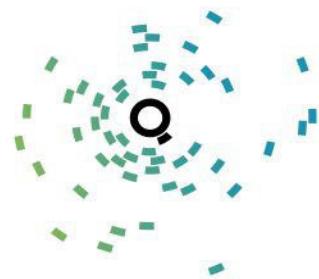
- select the data for the loading of the report
- select the hours for the loading of the report
- press the "Incarca Raportul" (Load Report) button

4.4.3 HR Level Appearances

Apariti Nivel HR						
Selectati statia :	QSound Soft	De la :	08.07.2013	Pana la :	11.07.2013	Generare Raport

This report presents information on the total number of appearances of the music tracks that are part of a Heavy Rotation (HR) rotation level during a selected period of time.

Playlist Manager



Statia : QSound Soft		De la : 08.07.2013	Pana la: 11.07.2013
Raport Aparitii Nivel HR			
Nivel HR	Numar Aparitii		
Xmas	0		
H1A	26034		
H3	1042		
H4	164		
HFA	4547		
90 Dance	0		
Naftalina	2689		
H1B	26842		
90 RnB	0		
Ora Exacta	0		
H3M	0		
H2U	14696		
H2M	11488		
RU	0		
RM	0		

4.4.4 HR level songs

This report allows for a weekly observation of the way in which the selected level is populated with songs according to the rules established in Settings – HR Levels/Mechanisms.

PLAYLIST MANAGER

Evolutie Nivel: up b 1

Week1 : 4.11.13 - 11.11.13 Nr.Piese = 16

JESSIE J - It's My Party - Alive
 KT TUNSTALL - Invisible Empire - Invisible Empire // Crescent M
 PARACHUTE - Meant To Be - Overnight
 EMMA STEVENS - A Place Called You - Heart On Hand
 ZRAUMWOHNUNG - Bei Dir Bin Ich Schoen - Achtung Fertig
 PASSENGER - Holes - All the Little Lights
 VUNK - Asa si? - Asa si?
 CARO EMERALD - Completely - The Shoking Miss Emerald
 LINKIN PARK - A Light That Never Comes (8 Steve Aoki) - Recharged
 CHRISTOPHE MAE - Tombe Sous Le Charme - Je Veux Du Bonheur
 DRAKE - Hold On, We're Going Home - Nothing Was the Same

Week2 : 11.11.13 - 18.11.13 Nr.Piese = 16

JESSIE J - It's My Party - Alive
 KT TUNSTALL - Invisible Empire - Invisible Empire // Crescent M
 PARACHUTE - Meant To Be - Overnight
 EMMA STEVENS - A Place Called You - Heart On Hand
 ZRAUMWOHNUNG - Bei Dir Bin Ich Schoen - Achtung Fertig
 PASSENGER - Holes - All the Little Lights
 VUNK - Asa si? - Asa si?
 CARO EMERALD - Completely - The Shoking Miss Emerald
 LINKIN PARK - A Light That Never Comes (8 Steve Aoki) - Recharged
 CHRISTOPHE MAE - Tombe Sous Le Charme - Je Veux Du Bonheur
 DRAKE - Hold On, We're Going Home - Nothing Was the Same

Week3 : 18.11.13 - 25.11.13 Nr.Piese = 16

JESSIE J - It's My Party - Alive
 KT TUNSTALL - Invisible Empire - Invisible Empire // Crescent M
 PARACHUTE - Meant To Be - Overnight
 EMMA STEVENS - A Place Called You - Heart On Hand
 ZRAUMWOHNUNG - Bei Dir Bin Ich Schoen - Achtung Fertig
 PASSENGER - Holes - All the Little Lights
 VUNK - Asa si? - Asa si?
 CARO EMERALD - Completely - The Shoking Miss Emerald
 LINKIN PARK - A Light That Never Comes (8 Steve Aoki) - Recharged
 CHRISTOPHE MAE - Tombe Sous Le Charme - Je Veux Du Bonheur
 DRAKE - Hold On, We're Going Home - Nothing Was the Same

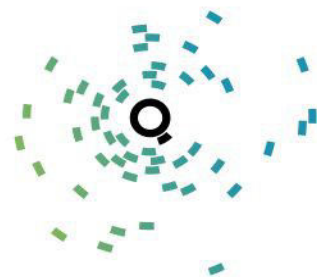
Week4 : 25.11.13 - 2.12.13 Nr.Piese = 13

JESSIE J - It's My Party - Alive
 KT TUNSTALL - Invisible Empire - Invisible Empire // Crescent M
 PARACHUTE - Meant To Be - Overnight
 EMMA STEVENS - A Place Called You - Heart On Hand
 LADY GAGA - Applause - Artpop
 PASSENGER - Holes - All the Little Lights
 CARO EMERALD - Completely - The Shoking Miss Emerald
 LINKIN PARK - A Light That Never Comes (8 Steve Aoki) - Recharged
 CHRISTOPHE MAE - Tombe Sous Le Charme - Je Veux Du Bonheur
 DRAKE - Hold On, We're Going Home - Nothing Was the Same

RAPORTE **IESIRE**

4.4.5 Songs of the genre

The report generates an alphabetically ordered list of songs that have the selected genre.



Piese de genul Ballad

Nr.	Artist	Piesa
1	2 BROTHERS ON THE 4TH FLOOR	Come Take My Hand
2	2PAC	Changes
3	50 CENT FT. JEREMIH	Down On Me
4	ABCD	Final De Razboi
5	ADELE	Set Fire To The Rain
6	ADELE	Set Fire To The Rain (BEATMIX)
7	ADELE	Someone Like You
8	ADELE	Someone Like You RMX
9	ADRIAN SINA	Arde Ceva
10	ADRIAN SINA FT DIANA HETEA	Back to me
11	AEROSMITH	I Don't Wanna Miss A Thing
12	AHMED CHAWKI FT PITBULL	Habibi I Love You
13	AISA	Sha La Love
14	ALB NEGRU FT RALFLO & RARES	Mi e Sete De Tine
15	ALBA WINGS	Say Goodbye To Yesterday
16	ALEJANDRO MARTINEZ	Sombriru ID Uzina De Dume
17	ALEX	Don't Say It's Over (BEATMIX)

4.4.6 Statistics on Song Appearance

Statistics
 Apariti Piesa

Piesa :

Genere Raport

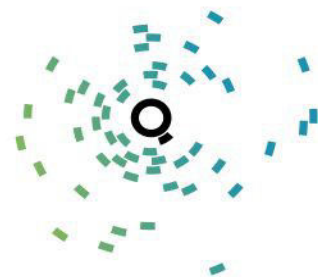
This is a report that provides information about the date and time of OnAir broadcasting related to the selected song.

Statia : QSound Soft

Raport Difuzare piesa PINK - Try

Data/Ora

13.06.2013 22:52:57
13.06.2013 17:49:19
13.06.2013 12:48:05
13.06.2013 07:49:48
13.06.2013 02:52:24
12.06.2013 20:48:10
12.06.2013 15:47:53
12.06.2013 10:46:56
12.06.2013 05:53:17
12.06.2013 00:52:39
11.06.2013 15:09:59
11.06.2013 05:10:47
11.06.2013 00:10:11
10.06.2013 16:48:11
10.06.2013 06:55:59



4.4.7 Statistics by genre

It represents a graphical report about the genre percentages of the songs in the database.

